



Communal Breakout Area



CHISWICK PLACE A GREAT PLACE TO WORK

High Quality Fitted Out Offices
With Furniture To Let

Entire Third Floor
7,158 sq ft (665 sq m)

www.chiswick-place.co.uk

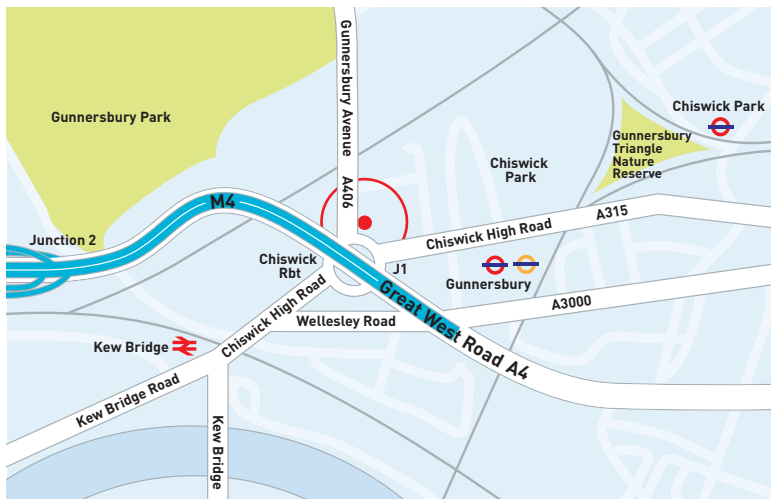
272 Gunnersbury Avenue
Gunnersbury, W4

CHISWICK PLACE A GREAT PLACE TO WORK

272 Gunnersbury Avenue
Gunnersbury, W4

LOCATION

Chiswick Place is a modern office development located in Gunnersbury. The offices are a short walk from Gunnersbury Station (London Underground District Line and London Overground North London Line) and is within walking distance of Kew Bridge Station (British Rail). Located near Chiswick Park and Chiswick Roundabout, the offices provide easy access to the M4, Great West Road, Chiswick High Road and Heathrow Airport. Nearby Chiswick High Road provides access to numerous shops and restaurants.



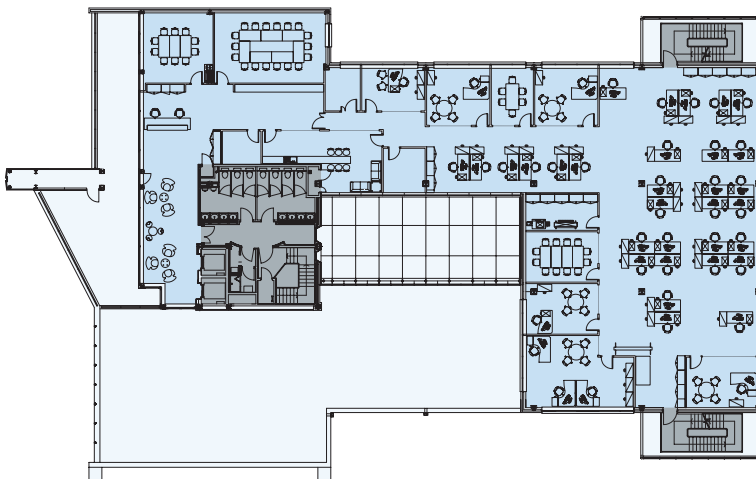
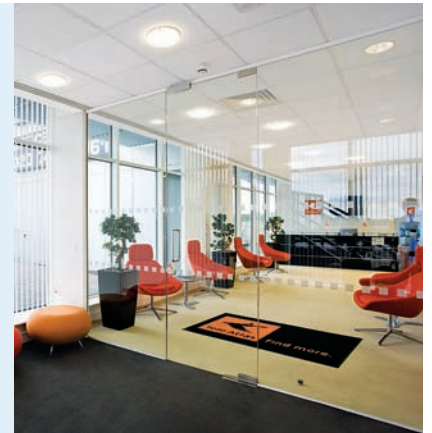
AMENITIES

- Commissionaire
- Two 8 person passenger lifts
- Excellent natural light
- Good floor to ceiling height
- Fully fitted with furniture
- Air conditioning
- Flood wired
- Suspended ceiling
- Full access raised floors
- Shower facilities
- Comms room
- 13 car parking spaces
- Communal breakout area/ meeting rooms

DESCRIPTION

The available accommodation which measures 7,158 sq ft (665 sq m), comprises the entire third, and top, floor in the building. Recently refurbished to a high standard and in excellent condition, the accommodation provides a number of private offices, meeting rooms, kitchen

and open plan areas. The floor has excellent natural light and panoramic views over west London. The building provides external branding rights for tenants that can easily be seen from Chiswick Roundabout and the connecting motorway network.



Indicative floor plan. Not to scale.



TERMS

On application.

VIEWING

Strictly by appointment through sole agent.

**ASHWELL
ROGERS**
020 7734 7766
www.ashwellrogers.com